

## MISSION STATEMENT

SHIELDS for families is a non-profit community-based organization dedicated to developing, delivering, and evaluating culturally sensitive, comprehensive service models that empower and advocate for high-risk families for over 20 years.

## HISTORY

SHIELDS was formed in 1987 in response to high incidence of infants born prenatally exposed to drugs at Martin Luther King Hospital in South Central Los Angeles.

SHIELDS began providing services to this unique population and has since grown to provide over 30 comprehensive, family-centered, wrap-around programs addressing issues facing high-risk families in South LA.



We believe that with education, access to appropriate services and caring guidance, families can rebuild their lives and become productive members of the community, nurturing parents and achieve all of their dreams.



*believing, building, becoming*

1315 N. Bullis / Suite 15  
Compton / CA 90221  
ph 310.668.9091  
fx 310.668.9087

TTD/TTY (English) 800.735.2922  
TTD/TTY (Spanish) 800.855.3000

[admindept@shieldsforfamilies.org](mailto:admindept@shieldsforfamilies.org)

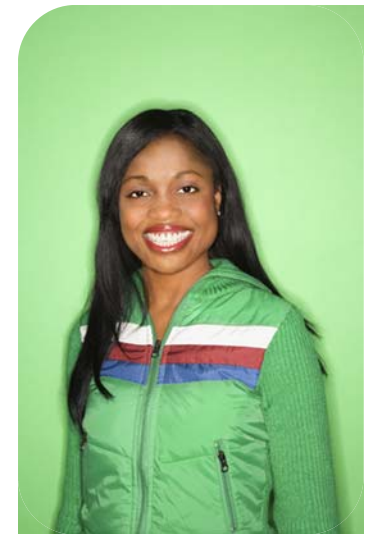


*believing, building, becoming*

SHIELDS for Families is an equal opportunity service provider that does not discriminate against any individual on the basis of race, color, religion, sex, national origin, age, disability, political affiliation or belief, citizenship/status as a lawfully admitted immigrant authorized to work in the United States, or participation in any WIA Title I-financially assisted program or activity. Auxiliary aids and services are available upon request to individuals with disabilities.

[www.shieldsforfamilies.org](http://www.shieldsforfamilies.org)

## Substance Abuse Division



We offer nationally recognized prevention, treatment and recovery services to a variety of clients including women and their families, adolescents with co-occurring disorders, monolingual Spanish-speaking clients and Drug Court referred clients.



*believing, building, becoming*

## PERINATAL SUBSTANCE-ABUSE TREATMENT

Our Perinatal Substance Abuse Programs are the cornerstone of our recovery programs. The staggering number of babies born prenatally exposed to drugs in the late 1980s galvanized the founders of SHIELDS to put an end to the epidemic. In each one of our programs, we offer families a comprehensive array of support, including child development and youth services, case management, vocational services, housing and transportation. Programs include:

**Genesis**, which started in 1990 in partnership with Martin Luther King Jr./Drew Medical Center, was the founding program of the organization. Offered in both English and Spanish to clients with a moderate level of substance abuse, Genesis serves 45 families at a time through a day-treatment program. Last year, more than 70% of the participants completed all phases of the program—more than double the national average.

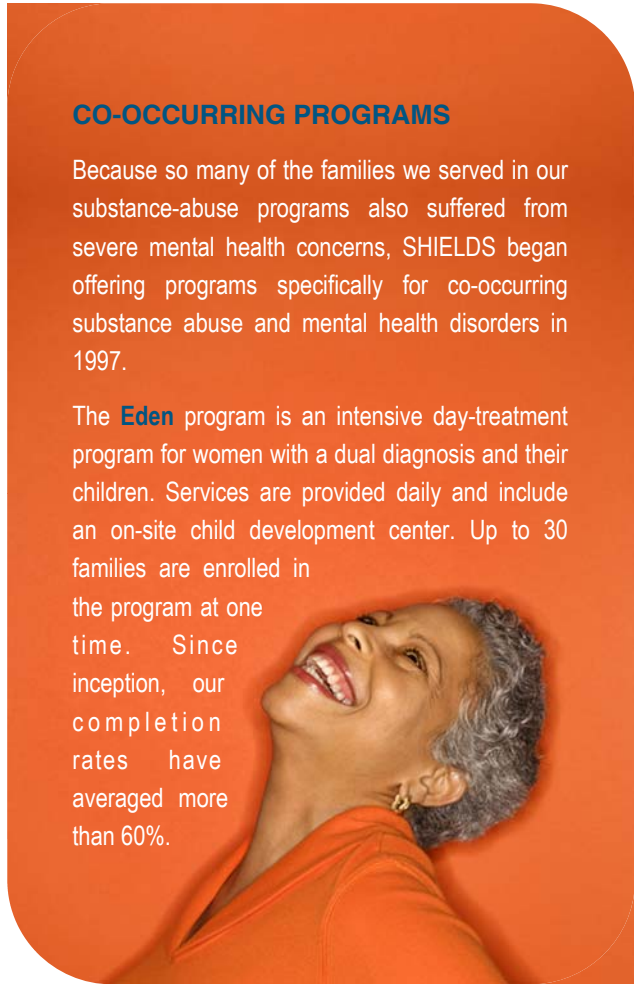
The **Exodus** program serves 45 families at a time in a family-centered therapeutic community. The entire family lives in an apartment community owned and managed by SHIELDS. This unique model, which serves homeless clients with a long history of substance abuse, is the only program in the United States that allows the entire family to live in the individual apartments. In the last five years, more than 81.2% of the participants completed all phases of the program—nearly four times the national average.

Building on the success of the Exodus program, we were proud to start **Tamar Village** in October 2007. This new residential treatment program is designed for women leaving the correction system who also have children involved with child protective services. SHIELDS provides long-term comprehensive services to a capacity of 30 families in partnership with the Department of Children and Family Services, the Los Angeles County Sheriff's Department and the Public Defender's Office.

## CO-OCCURRING PROGRAMS

Because so many of the families we served in our substance-abuse programs also suffered from severe mental health concerns, SHIELDS began offering programs specifically for co-occurring substance abuse and mental health disorders in 1997.

The **Eden** program is an intensive day-treatment program for women with a dual diagnosis and their children. Services are provided daily and include an on-site child development center. Up to 30 families are enrolled in the program at one time. Since inception, our completion rates have averaged more than 60%.



Our **Revelation** program is an intensive outpatient program that provides services to youth ages 13 to 21 who present co-occurring substance abuse and mental health disorders. In 2008-2009, more than 70 youth participated in this program. Youth, who attend the program after school, come from families that suffer from multi-generational substance abuse issues and have experienced severe trauma and abuse.

## OUTPATIENT SERVICES

### The Ark Program

Our outpatient programs serve clients through an intensive treatment model. Services include counseling, life skills, education and vocational services, health education, nutrition, parenting, mental health and relapse prevention. Last year, more than 70% of the participants completed all phases of the program—more than double the national average.

### Community Assessment Services Center (CASC)

SHIELDS conducts assessments for mental health and substance abuse, as well as linkage to services at one of our treatment programs or to other community based agencies. In addition, we have staff based in offices at the Compton Superior Court, Edelman Juvenile Dependency Court, and Kenyon Juvenile Justice Center in order to provide assessments and referral services. Monthly, the CASC conducts an average of 150 assessments.

*Outreach* is conducted throughout the community by the SHIELDS Outreach team. This includes outreach to local medical clinics, DPSS and social services agencies as well as non-traditional sites such as parks, Laundromats and check-cashing locations.

**Lifetime Aftercare** services are provided to all program graduates. Services include counseling, case management, support groups, advocacy and leadership training, access to job placement and housing services, as well as social activities.