

MISSION STATEMENT

SHIELDS for families is a non-profit community-based organization dedicated to developing, delivering, and evaluating culturally sensitive, comprehensive service models that empower and advocate for high-risk families for over 20 years.

HISTORY

SHIELDS was formed in 1987 in response to high incidence of infants born prenatally exposed to drugs at Martin Luther King Hospital in South Central Los Angeles.

SHIELDS began providing services to this unique population and has since grown to provide over 30 comprehensive, family-centered, wrap-around programs addressing issues facing high-risk families in South LA.



believing, building, becoming

11601 S. Western Avenue
Los Angeles / CA 90047
ph 323.242.5000
fx 323.242.5011

TTD/TTY (English) 800.735.2922
TTD/TTY (Spanish) 800.855.3000

childrenyouth@shieldsforfamilies.org



SHIELDS for Families is an equal opportunity service provider that does not discriminate against any individual on the basis of race, color, religion, sex, national origin, age, disability, political affiliation or belief, citizenship/status as a lawfully admitted immigrant authorized to work in the United States, or participation in any WIA Title I-financially assisted program or activity. Auxiliary aids and services are available upon request to individuals with disabilities.

www.shieldsforfamilies.org

We believe that with education, access to appropriate services and caring guidance, families can rebuild their lives and become productive members of the community, nurturing parents and achieve all of their dreams.

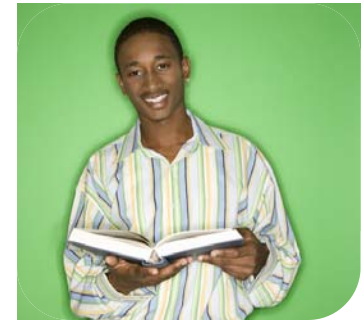
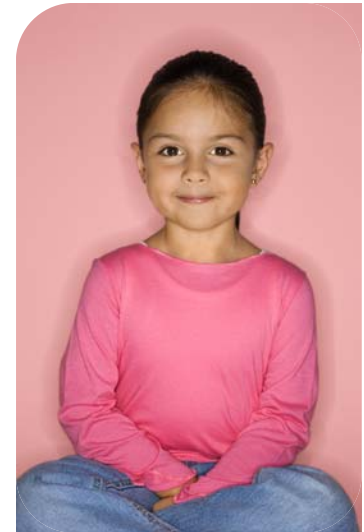
Facebook
www.facebook.com/shields4family

Twitter
www.twitter.com/SHIELDS4Family

Blog
www.shieldsforfamilies.blogspot.com

LinkedIn
www.linkedin.com/company/shields-for-families

Children and Youth Division



The early years of life are among the most critical and most vulnerable for a child; a time when a child needs stability and family support.

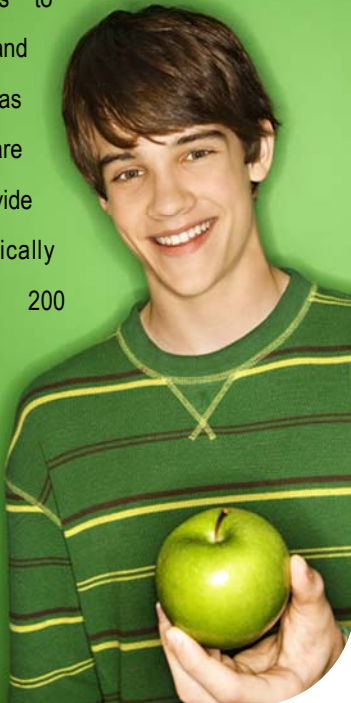
We start with children as young as 6 weeks in our child development centers and stay with them as they grow and learn in elementary, middle and high school.



SHIELDS has four **Child Development Centers** that serve more than 160 children ages 0 to 5 annually. Children in our program have at least one parent attending our substance abuse treatment programs. In fact, SHIELDS is the only program in the United States that enrolls all children in services with their mother or father, ensuring that families remain intact and avoiding out-of-home placements. Children participate in activities that promote their social, emotional, cognitive, language, creative and physical development and ensure that they attain the skills necessary for entering kindergarten. Each child receives developmental screenings and assessments to ensure they receive the specialized attention they need, an Individual Education Plan, and intensive center-and home-based early childhood education services. Since a parent is a child's first teacher, SHIELDS' early childhood education specialists work hand-in-hand with parents to ensure they have the information and support they need to foster their child's development and education. Services include Mommy & Me classes, Daddy & Me classes, parenting classes and supervised interaction workshops.



South Los Angeles remains among the most disadvantaged and underserved communities in the nation, with an infant mortality rate 20% higher than the overall figure for the county. Our **Healthy Start** program works to reduce infant mortality and morbidity, as well as disparities in health care in the area. We provide comprehensive, critically needed services to 200 substance-abusing pregnant and postpartum women and their children annually. Women with children under



2 years old receive case management, health education, screening for perinatal depression, and interconceptional continuity of care.

Our After-school and Youth Services programs for children and youth ages 6 to 18 are designed to meet the needs of inner-city students. The hours immediately after school, between 3 p.m. and 6 p.m., are when students are most likely to commit crimes or become the victims of crime. After-school programs have been proven to prevent violence in the community, reduce teen drug abuse and pregnancy, and improve school attendance. **Heroes and Sheroes** programs provide prevention and early intervention for students, including self-awareness, tutoring, mentoring, and social and recreational activities that help children succeed in school and in life.

SHIELDS is also a partner in multiple collaborative networks where we provide intensive case management for families with children 0-5. These include: Best Babies, Ready for School (2 networks), and the Immunization Project.

Programs include

- ACT (Achieving Change Together) Program: Partnerships for Families (PFF)
- ASK (Ask, Seek, Knock) Program: Prevention Initiative Demonstration Project (PIDP)
- Best Babies
- Child Development Centers
- Healthy Start Program
- Heros & Sheros Program
- Ready for School
- Tamar Village